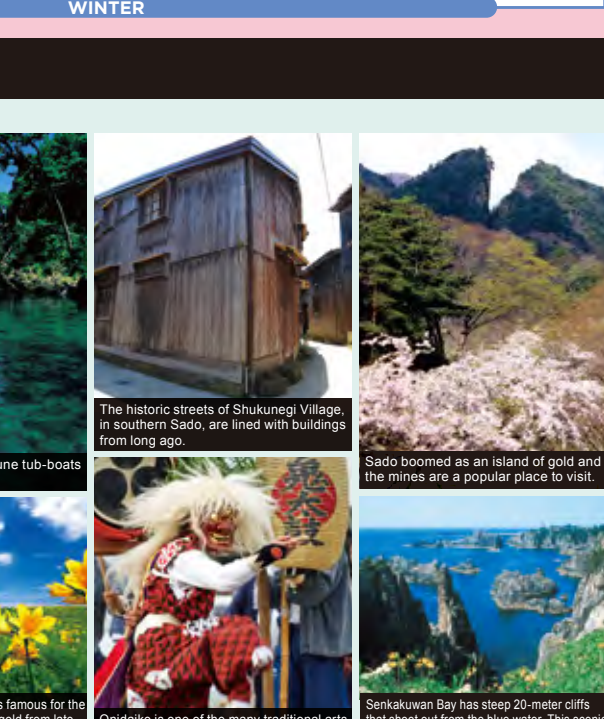
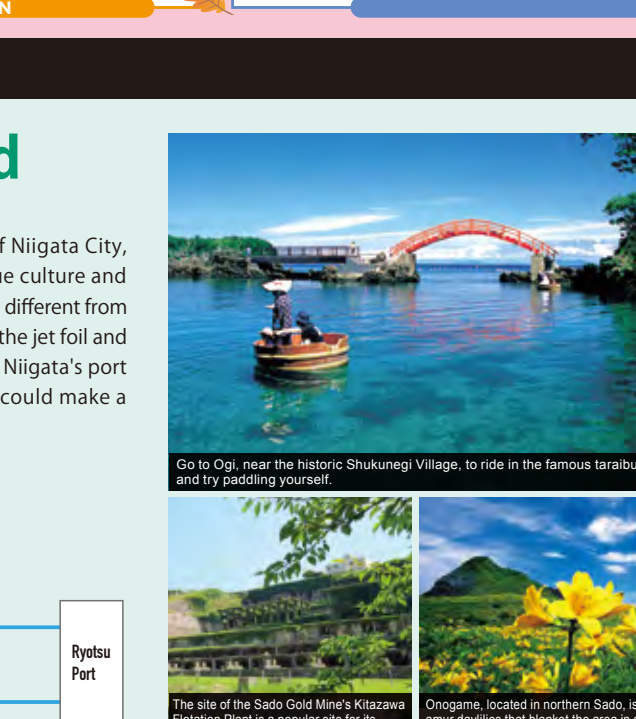
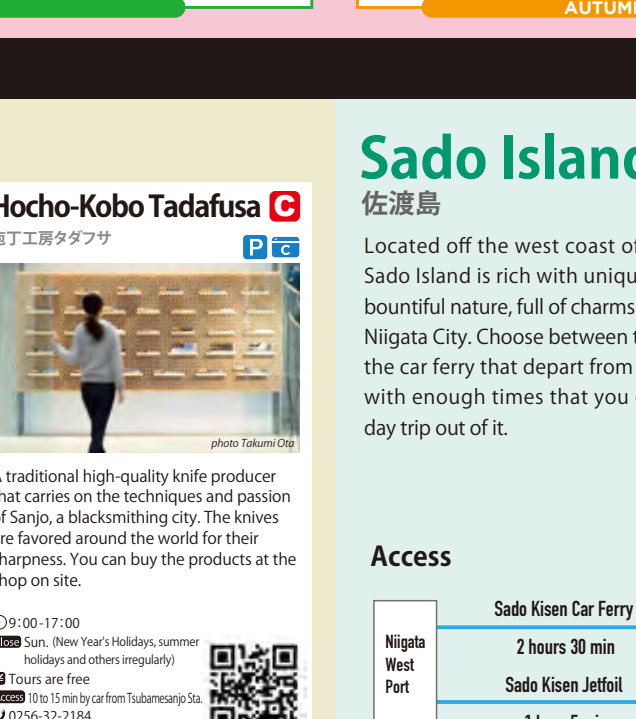
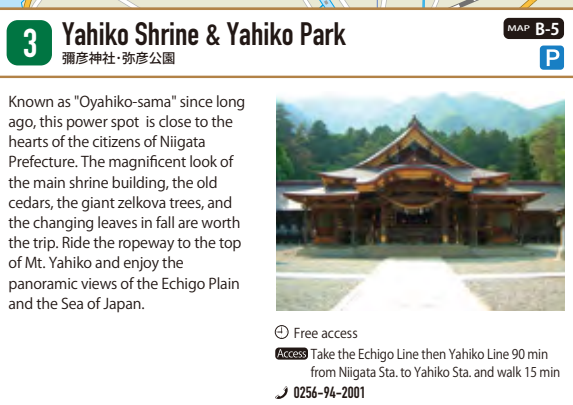
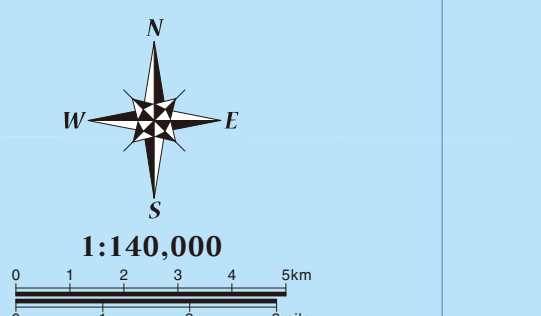
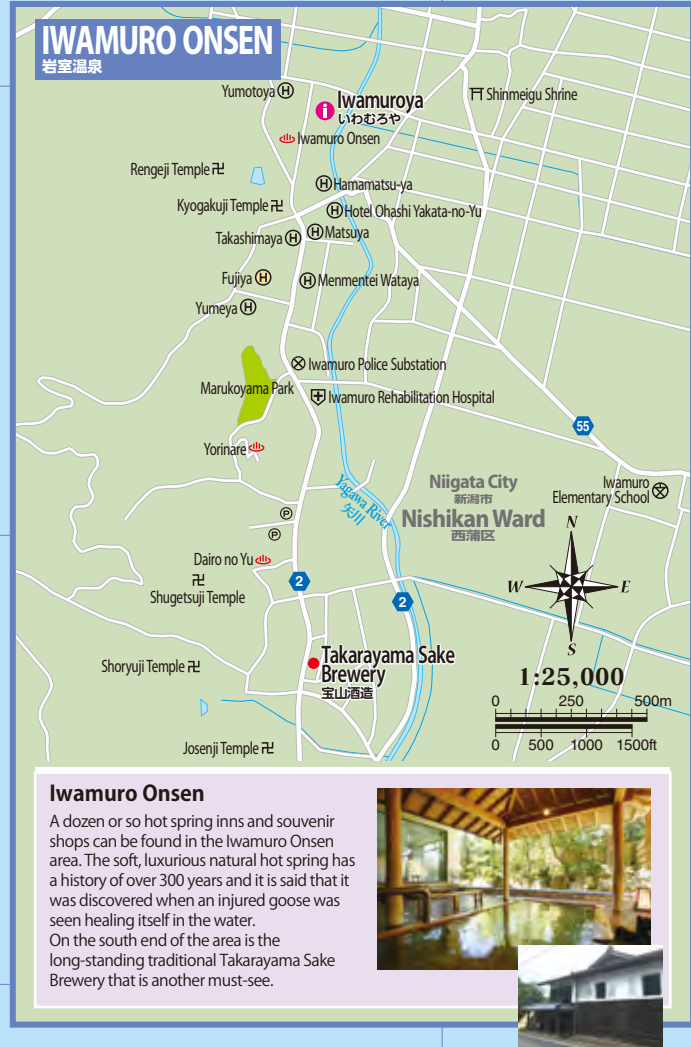


新潟市全図



Niigata City Events Calendar

* Exact dates of events are subject to change. Check official websites for detailed information.



Tsubame & Sanjo

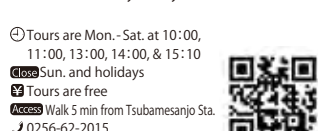
located along the Joetsu Shinkansen Line, the sub'urbane & Sanjo area is a perfect place to visit before or after your trip to Niigata City. Known as the place where Apple got the metal back for the iPod, it's well known as a place where high quality metalworking is done. Visit famous factories and see the traditional craftsmanship with your own eyes.



玉川堂



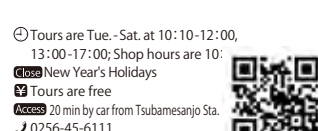
Tour this factory, boasting a history of over 200 years, and see how they make their tsuiki hammered copperware. Reservations for the 20-min tour are required for groups of 5 or more. Of course you can buy any items that catch your eye!



Suwada Open Factory



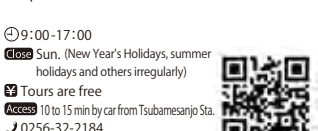
Using their expert techniques, this factory crafts nail clippers, bonsai tools, and more. After taking a free factory tour to see their expert techniques in action, buy things at the shop or take a breather at the restaurant or café on site.



庖丁工房タダフサ

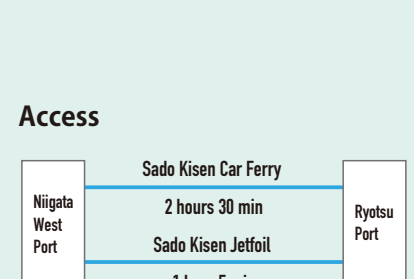


A traditional high-quality knife producer that carries on the techniques and passion of Sanjo, a blacksmithing city. The knives are favored around the world for their sharpness. You can buy the products at the shop on site.



佐渡島

Located off the west coast of Niigata City, Sado Island is rich with unique culture and bountiful nature, full of charms different from Niigata City. Choose between the jet foil and the car ferry that depart from Niigata's port with enough times that you could make a day trip out of it.



Go to Ogi, near the historic Shukunegi Village, to ride in the famous taraibune tub-boats and try paddling yourself.

The historic streets of Shukunegi Village, in southern Sado, are lined with buildings from long ago.

Sado boomed as an island of gold and the mines are a popular place to visit.

Onigayo is one of the many traditional arts.

Senkakuwan Bay has steep 20-meter cliffs that stand as far as the eye can see.